

# GRASSY WEEDS

<b>TITLE:</b>	<b>ROUGHSTALK BLUEGRASS</b>
<b>LATIN NAME:</b>	<i>Poa trivialis</i>
<b>FAMILY:</b>	Poaceae
<b>OVERALL DESCRIPTION:</b>	
A stoloniferous perennial grass considered a turfgrass weed but is sometimes used in grass seed mixes for shady areas. Stems are erect, bending, or reclining and are reddish. The leaves may be yellow green but can turn brown to red during drought periods. It is also intolerant to heat and foot traffic.	
<b>LIFE CYCLE</b>	Perennial cool season grass
<b>SEASONS OF GROWTH</b>	Might go dormant in summer, but remains green in winter, when tip burn may occur.
<b>LEAF SHEATHS</b>	Rough, keeled, and compressed.
<b>FLOWERS / SEEDHEAD</b>	Flower blooms mainly in May and June. Has seed spikelets with 2-3 seeds each.
<b>LEAF BLADES</b>	Blades are flat and rough with boat-shaped tips.
<b>LEAF VERNATION</b>	Leaves are folded in the bud.
<b>LIGULE</b>	Large, tapering, and membranous.
<b>AURICLE</b>	None
<b>ROOTS</b>	Fibrous roots and stolons that grow above ground.
<b>ANY OTHER DISTINGUISHING TRAITS</b>	It is lighter green than Kentucky bluegrass and larger in size than annual bluegrass.



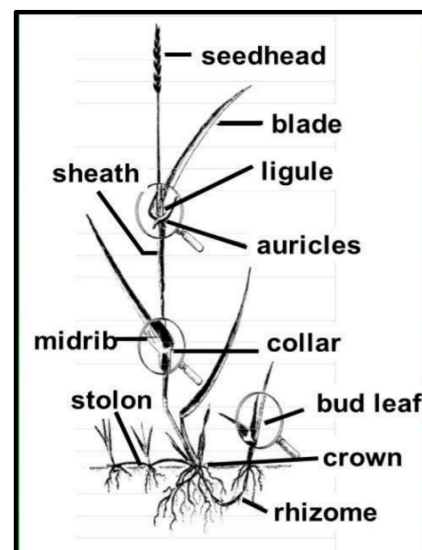
Rutgers University



Penn State University



North Carolina State University



TYPICAL GRASSY WEED

<b>TYPE OF SOIL CONDITIONS OR PRACTICES FAVORING GROWTH</b>	Thrives in poorly drained, compacted soil, and shade. Will move to sunny areas of the lawn. Spreads aggressively. It grows in woods, meadows, and along roadsides. It usually remains green in shady areas but is not drought tolerant and will turn reddish brown in hot, sunny areas.
<b>KEY MESSAGE TO HOMEOWNER</b>	Grows rapidly in the spring and is often quite conspicuous in freshly mowed tall fescue lawns because of the rapid growth rate. Manifests itself as a taller-growing, light green weed. (But do not get it confused with Yellow Nutsedge.) Can be distinguished by its reddish stems, and even the leaves have an orange tint to them. It can be grown in the shade to cover bare spots. The fact that it is intolerant to heat, drought, and traffic makes it unsuitable for a sunny lawn turfgrass.
<b>CULTURAL CONTROL</b>	Remove roughstalk grass before it seeds and maintain a healthy lawn to prevent regrowth of this weedy grass. Hand weed or may need to use a shovel or sod cutter for its removal. If coverage is extensive, a total lawn renovation may be necessary.
<b>BIOLOGICAL CONTROL</b>	None noted.
<b>CHEMICAL CONTROL</b>	No selective herbicides are available to homeowners. Roughstalk grasses should be spot treated with a nonselective herbicide containing glyphosate and hand weeded. However, this will not prevent it from returning the following year.
<b><u>SOURCES OF INFORMATION</u></b>	<p>Video, Roughstalk Bluegrass, Dr.Shawn Askew, VA Tech, Professor, Turf Weed Specialist  <a href="https://www.youtube.com/watch?v=7mHTm440Bbc&amp;list=PLN87bd8W1ymnbFHsul-Wa3uBZPhHTGqAp&amp;index=5">https://www.youtube.com/watch?v=7mHTm440Bbc&amp;list=PLN87bd8W1ymnbFHsul-Wa3uBZPhHTGqAp&amp;index=5</a>”</p> <p>Virginia Cooperative Extension Pest Management Guide, Home Grounds &amp; Animals 2021  <a href="https://fairfaxgardening.org/wp-content/webdocs/ref/2021PestManagementGuide.pdf">https://fairfaxgardening.org/wp-content/webdocs/ref/2021PestManagementGuide.pdf</a></p> <p>University of Maryland Extension, Roughstalk Bluegrass  <a href="https://extension.umd.edu/resource/roughstalk-bluegrass">https://extension.umd.edu/resource/roughstalk-bluegrass</a></p> <p>North Carolina State Extension, TurfFiles, Rough Bluegrass  <a href="https://www.turffiles.ncsu.edu/grasses/rough-bluegrass/">https://www.turffiles.ncsu.edu/grasses/rough-bluegrass/</a></p> <p><i>Weeds of The Northeast</i>  Uva, Richard H., Joseph C. Neal, &amp; Joseph M. DiTomaso. 1997. Cornell University Press. Roughstalk Bluegrass. 80-81.</p>
<b>FCMGA SPECIAL PROJECT RESEARCH BY</b>	Norene M. Gerstner, FCMGA Master Gardener